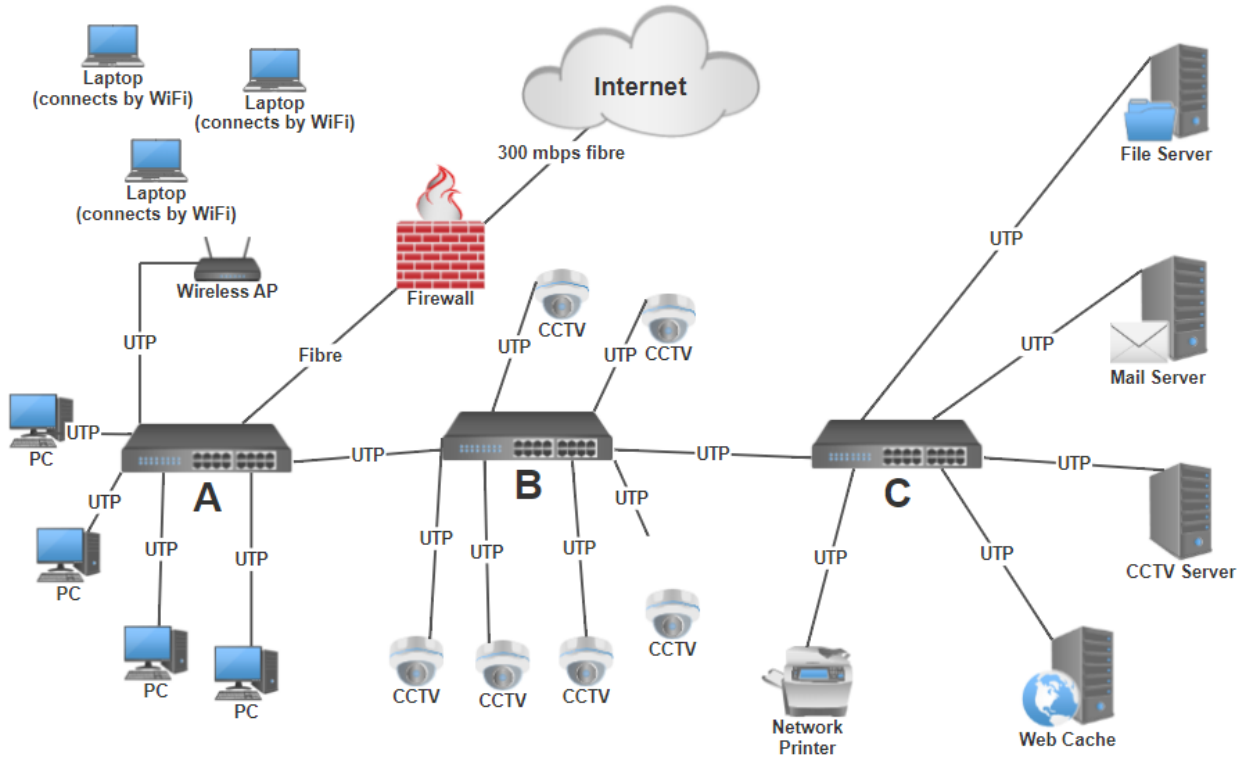
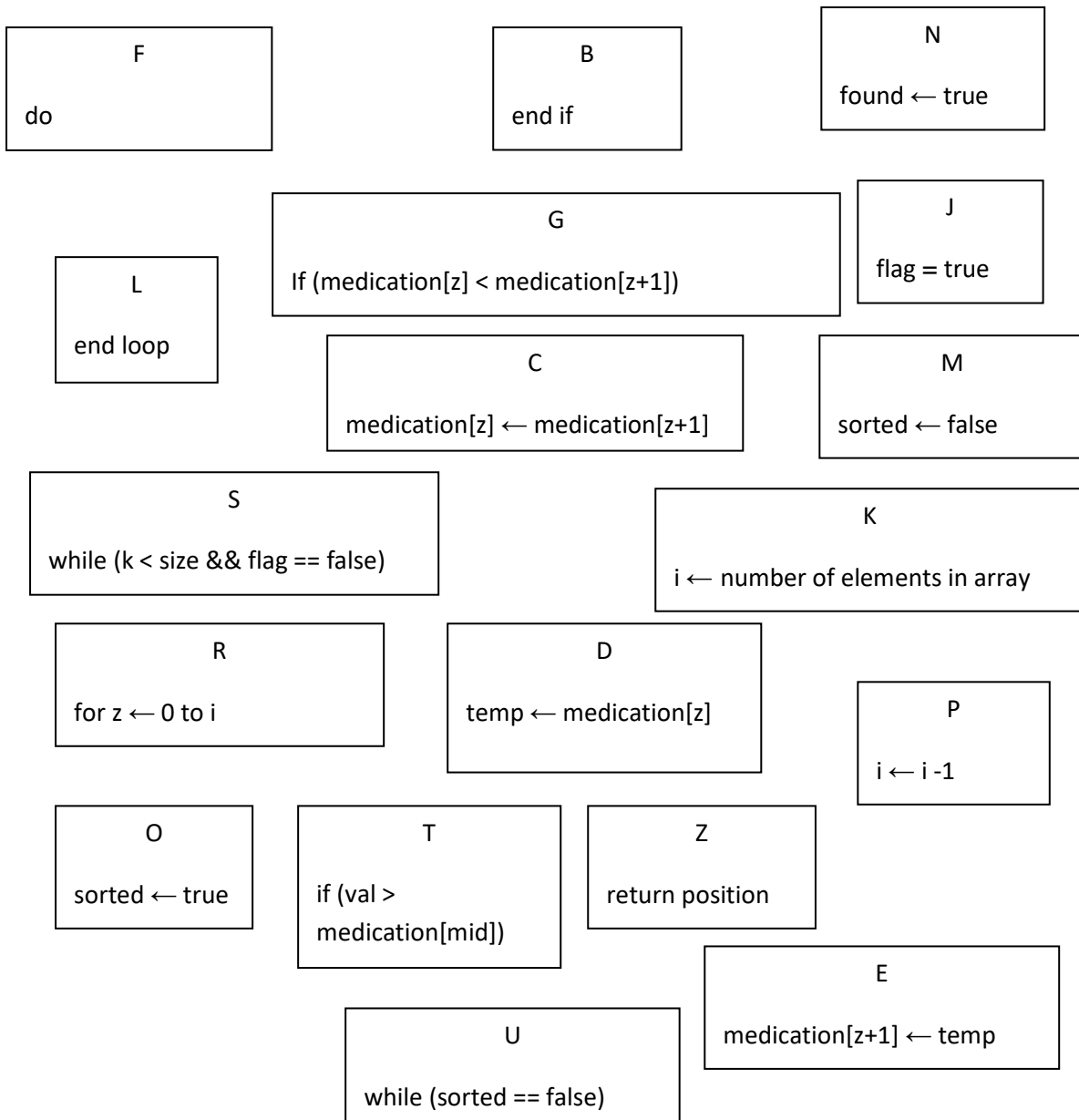


**APPENDIX A**

**Network Layout**



**APPENDIX B**



**APPENDIX C**

1	size ← 4
2	temp ← 0
3	runningAvg ← 0
4	count ← 0
5	for k ← 0 to size -1
	begin
6	temp ← temp + ageArr[k]
7	count ++
8	runningAvg ← runningAvg + (temp / count)
9	if (runningAvg > 60)
10	display "Error"
	end if
	end loop
11	display (temp / count)