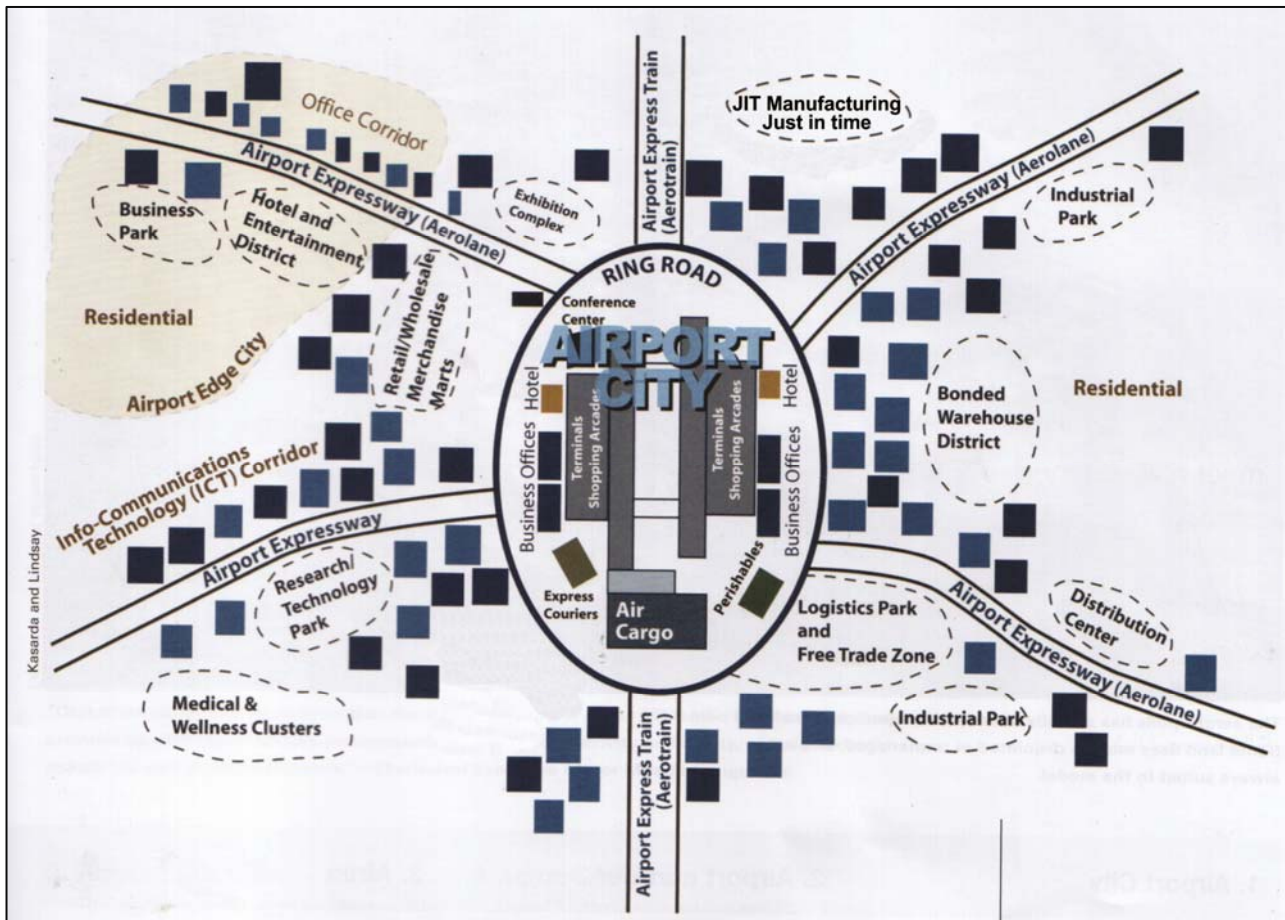


**Figure 3: The Aerotropolis concept shows time-sensitive industries located close to the airport. Mixed-use development along access routes support this core – Question 1.4**



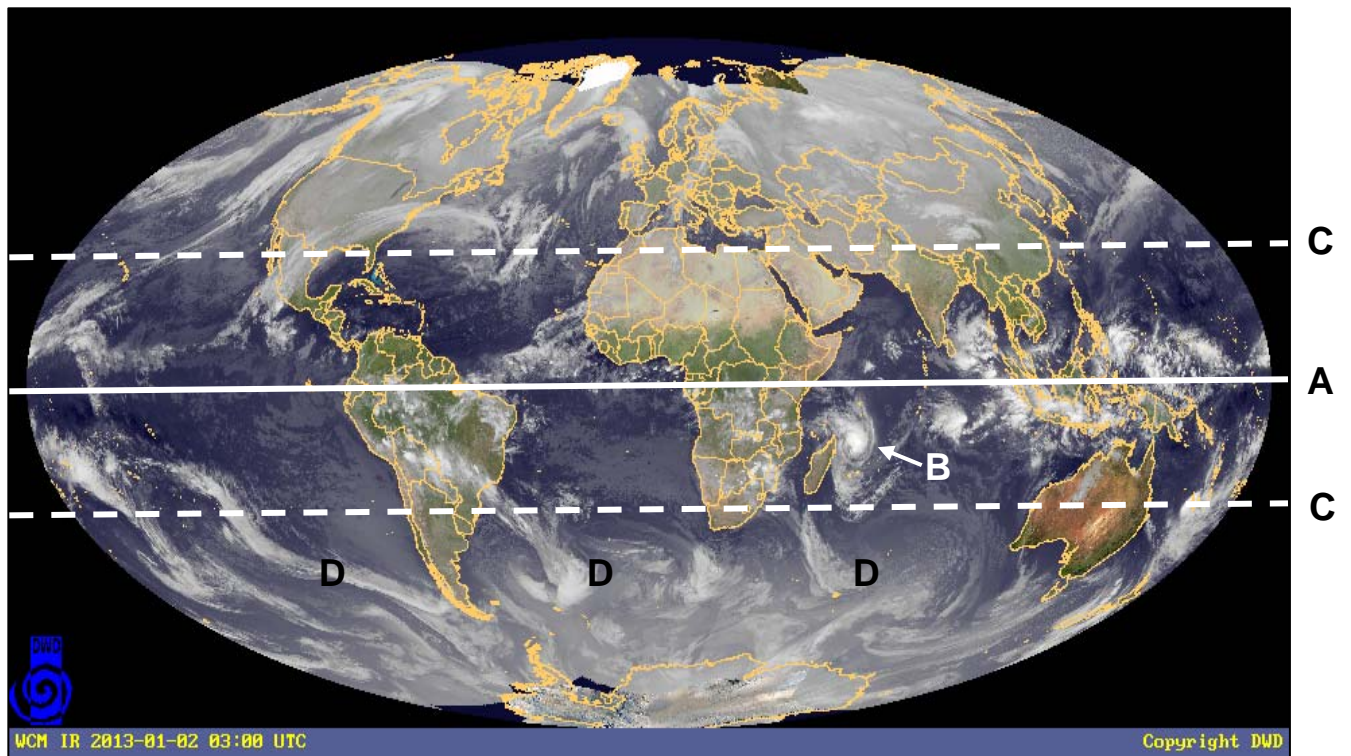
[Adapted: Urban Green File, December 2012]

**Photograph 1: An e-toll plaza on the freeway from ORT International Airport to Johannesburg – Question 1.5.5**



[Source: Examiner's photograph]



**Photograph 2: A global satellite image – Question 2.1**

[Source: Deutscher Wetterdienst (German Weather Service)]

**Photograph 3: A river valley in the Northern Cape – Question 2.3**

[Photograph: C Raciborska]



**Photograph 5: Piketberg Pass, W Cape –  
Question 3.2**



[Source: Examiner's photograph]

**Photograph 6: Igneous Landform –  
Question 3.4**



[Source: Examiner's photograph]

**Photograph 7: Igneous Landform –  
Question 3.4**



[Source: Examiner's photograph]

**Photograph 8: Road near Sutherland in  
the Karoo – Question 3.4.4**



[Source: Examiner's photograph]

**Photograph 9: A satellite image of De Doorns, Hex River Valley, Western Cape – Question 4.2**



[Source: Google Earth]

**Photograph 12: A settlement in the Northern Cape – Question 5.1**



[Source: Examiner's photograph]