

QUESTION 2

TRANSITION  
DEVELOPMENT

The figure shows the Front View, Top View and Left View of an AIR CONDITIONING VENT in First Angle orthographic projection.

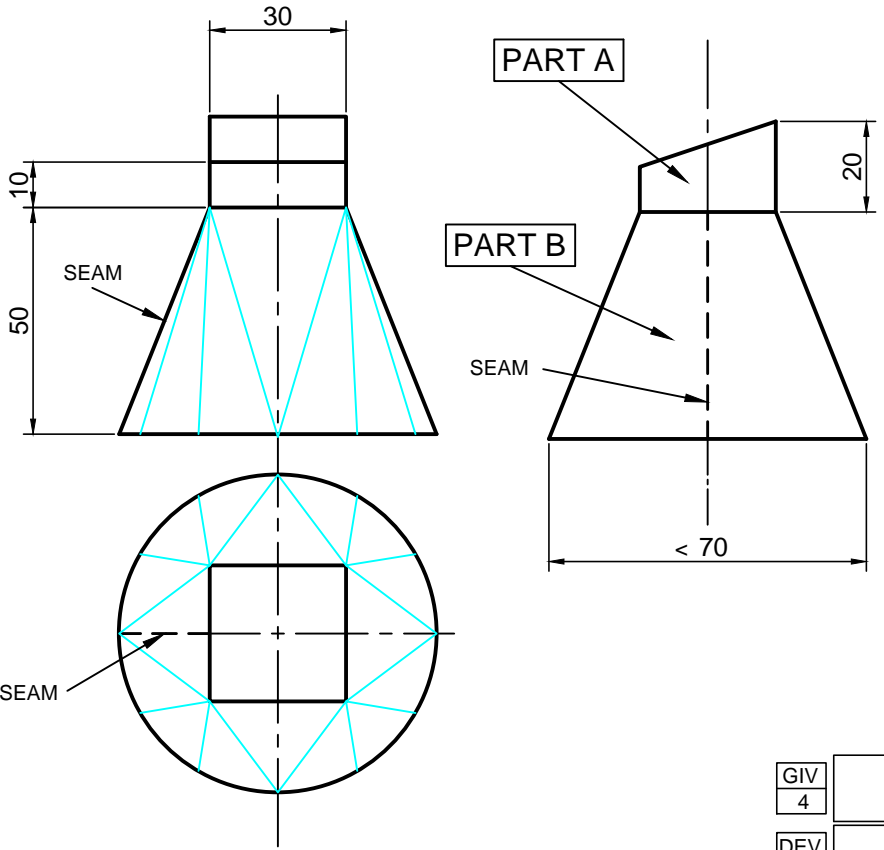
Draw the following:

- 2.1 Copy the given FRONT view and TOP view only, positioning them appropriately on the given centre lines.
- 2.2 Draw the development of the SQUARE DUCTING (PART A).
- 2.3 Using triangulation, develop the transition piece (PART B).
- 2.4 Show all construction.

ASSESSMENT CRITERIA

You will be assessed on your ability to do the following:

- |   |    |
|---|----|
| • redraw the given front and top views only | 4  |
| • develop the square duct                   | 7  |
| • find the necessary true lengths           | 4  |
| • develop the transition piece              | 20 |



GIV	4
DEV	7
T / L	4
DEV	20

35 MARKS

EXAMINATION NUMBER

--	--	--	--	--	--	--	--	--	--	--	--	--

ANSWER SHEET 2

Given	●	=	4
Duct Dev	●	=	7
True length	●	=	4
Trans-Dev	●	=	20
35			