



basic education

Department:
Basic Education
REPUBLIC OF SOUTH AFRICA

NATIONAL SENIOR CERTIFICATE

GRADE 12

MUSIC P1

NOVEMBER 2011 (1)

CENTRE NUMBER:

--	--	--	--	--	--	--	--

EXAMINATION NUMBER:

--	--	--	--	--	--	--	--	--	--	--	--	--

MARKS : 125

TIME: 3 hours

This question paper consists of 15 pages and 1 page of manuscript paper.

INSTRUCTIONS AND INFORMATION

1. This question paper consists of TWO sections, namely SECTION A and SECTION B.
2. Answer SECTION A in pencil only in the spaces provided on the question paper.
3. Answer SECTION B in the ANSWER BOOK provided.
4. Number the questions correctly according to the numbering system used in this question paper.
5. The last page of this question paper is manuscript paper intended for rough work. The candidate may remove it.

MARKING GRID

QUESTION	TOTAL MARKS	MARKER	MODERATOR
SECTION A			
1	14		
2	15		
3	9		
4	10		
5	12		
SUBTOTAL	60		
SECTION B			
6	5		
7	9		
8	6		
9	12		
10	10		
11	10		
12	5		
13	8		
SUBTOTAL	65		
GRAND TOTAL	125		

SECTION A: THEORY OF MUSIC

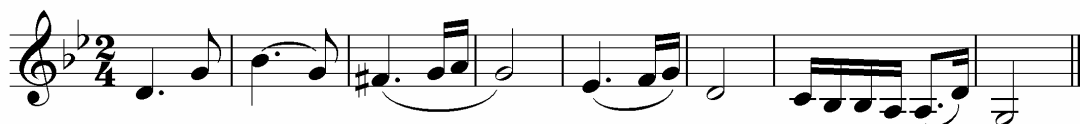
Complete QUESTIONS 1, 2, 3, 4 and EITHER QUESTION 5.1 OR QUESTION 5.2.

QUESTION 1

1.1 In which key is the music example below?

Hungarian Dance No. 5

Brahms



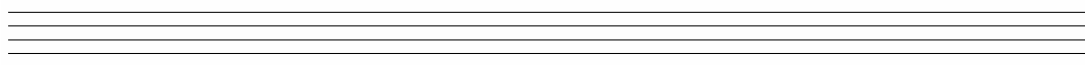
(1)

1.2 Add accidentals to the following notes to form the dorian mode on A^b.



(2)

1.3 Write B major scale ascending and descending in the alto clef in simple triple time with key signature. You may use any note values of your choice. Indicate semitones with slurs.



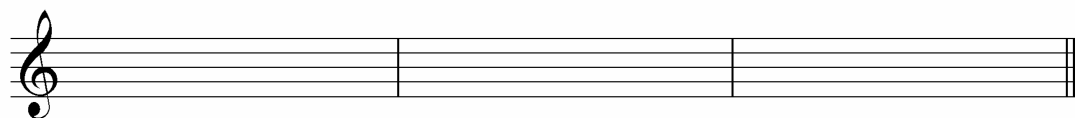
(5)

1.4 Identify TWO diminished triads and ONE augmented triad that occur in E^b harmonic minor scale. Notate the triads in first inversion.

Diminished

Diminished

Augmented



(6)
[14]

QUESTION 2

Study the fragment below and then answer the questions that follow.

Six Chansons (1939) Printemps (Spring)

Paul Hindemith

Moderate (♩ = 66 - 70)

SOPRANO
O song that from the sap art pour - ring and through the sound - ing

ALTO
Song that from the sap art pour-ing and through the sound - ing

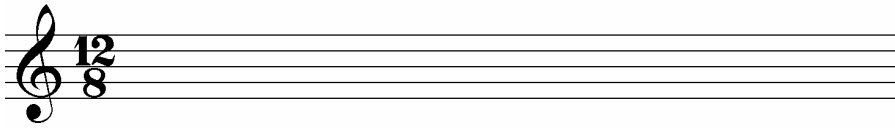
TENOR
Song that from the sap art pour-ing and through the sound - ing

BASS
O song — now pour —

PIANO
For rehearsal only

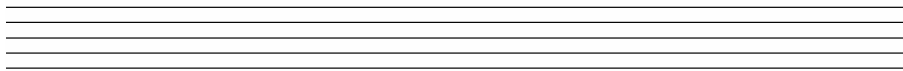
Moderate (♩ = 66 - 70)

2.1 Transpose the notes of the alto part in bar 2 at (a) for trumpet in B^b.



(3)

2.2 Rewrite bar 2 of the tenor part at (b) in simple quadruple time. Add the new time signature.



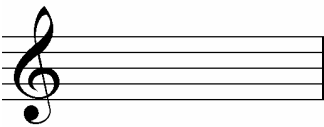
(3)

2.3 Name the interval at (c).



(1)

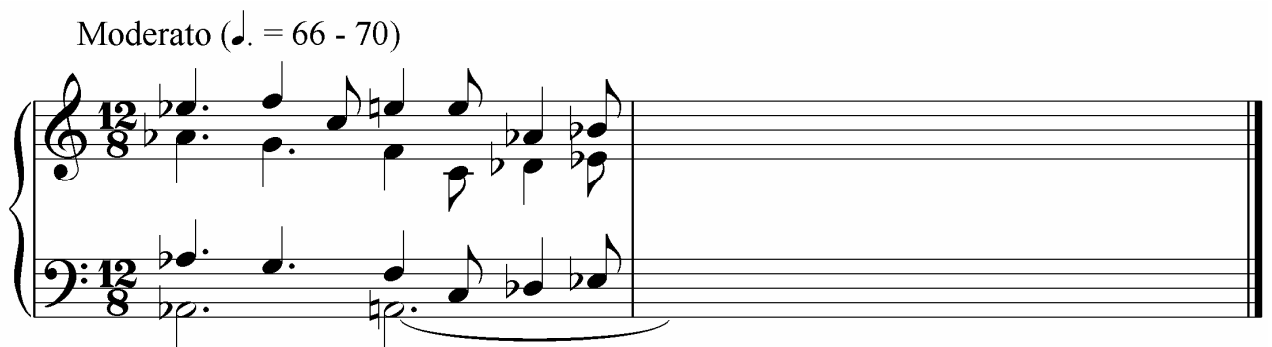
2.4 Write the inversion of the interval at QUESTION 2.3 in enharmonic form.



(2)

2.5 Rewrite the vocal parts of bar 2 in closed score. Omit the text.

Moderato (♩. = 66 - 70)

A musical score for piano. It features a treble clef and a bass clef. The time signature is 12/8. The tempo is marked 'Moderato' with a quarter note equal to 66-70 beats per minute. The score shows a vocal line in the treble clef and a piano accompaniment in the bass clef. The vocal line consists of a series of notes, some with lyrics underneath. The piano accompaniment consists of chords and moving lines. The score ends with a double bar line.

(6)
[15]

QUESTION 3

Study the four-part fragment below and then follow the instructions.

- 3.1 Complete the soprano part in bar 1 at (a) so that it will include an accented passing note. (2)
- 3.2 Complete the tenor part of the cadence in the block at (f) to illustrate a suspension. (3)
- 3.3 Figure the chords at (b), (c), (d) and (e), for example G: I⁶ or G/B, et cetera.

(b) _____

(c) _____

(d) _____

(e) _____

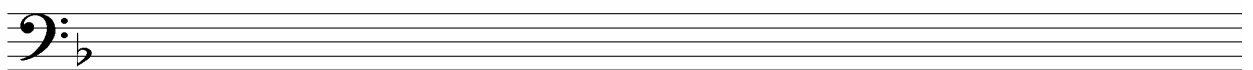
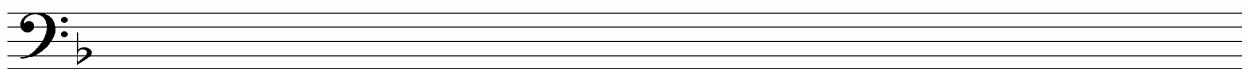
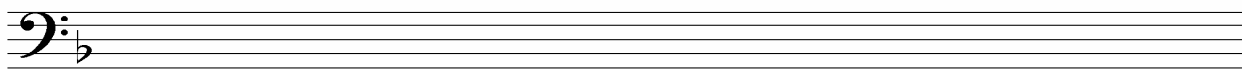
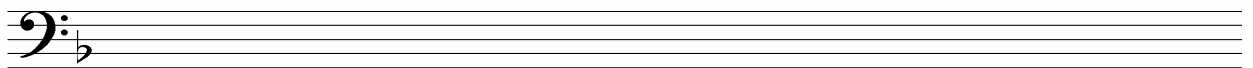
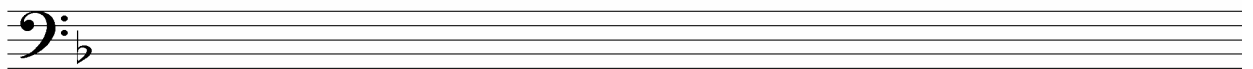
(4)
[9]

QUESTION 4

Use any ONE of the opening motifs below to complete a twelve-bar melody in ABA form. Add dynamic and articulation marks.

Instrument: Cello

Andante



The melody will be marked according to the following guidelines:

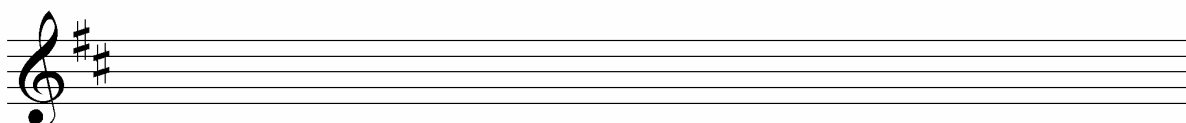
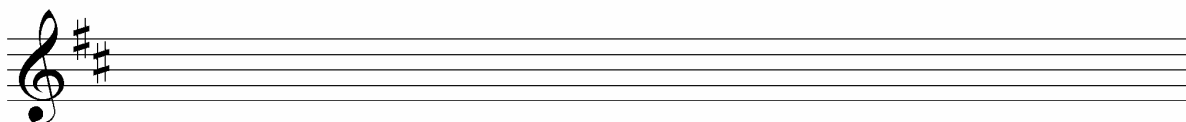
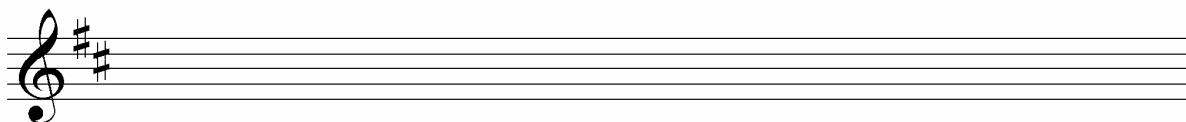
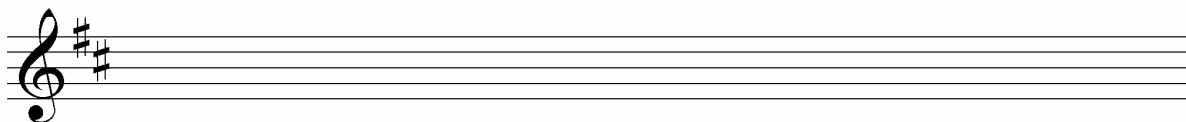
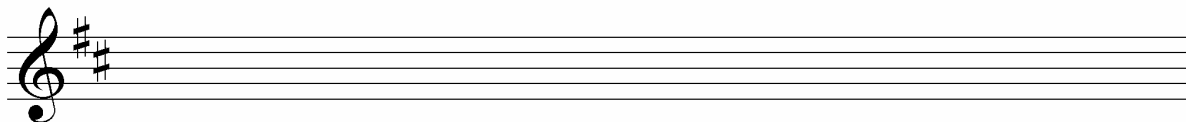
DESCRIPTION	MARK ALLOCATION	CANDIDATE'S MARKS
Form and cadential points	6 (3 + 3)	
Musicality: melodic shape and climax	8	
Dynamics and articulation	2	
Correctness of notation: Number of bars, note stems, beats per bar, accidentals, spacing	4	
TOTAL	20 ÷ 2 = 10	

[10]

OR

Instrument: Clarinet

Allegretto



The melody will be marked according to the following guidelines:

DESCRIPTION	MARK ALLOCATION	CANDIDATE'S MARKS
Form and cadential points	6 (3 + 3)	
Musicality: melodic shape and climax	8	
Dynamics and articulation	2	
Correctness of notation: Number of bars, note stems, beats per bar, accidentals, spacing	4	
TOTAL	20 ÷ 2 = 10	

[10]

QUESTION 5

Answer EITHER QUESTION 5.1 OR QUESTION 5.2.

5.1 Complete the following four-part harmonisation by adding suitable chords in the given style:

The harmonisation will be marked according to the following guidelines:

DESCRIPTION	MARK ALLOCATION	CANDIDATE'S MARKS
Correctness	6	
Choice of chords	6	
TOTAL	12	

[12]

OR

5.2 Study the 12-bar blues work below and then follow the instructions.

Back Porch Blues

Original music by Ana Sanderson

♩ = 84

The first system of the 12-bar blues piece consists of three measures. The key signature is three sharps (F#, C#, G#) and the time signature is 4/4. The melody in the treble clef starts with a half note chord, followed by a triplet of eighth notes. The bass line in the bass clef features a steady eighth-note accompaniment.

The second system consists of two measures. The first measure is empty in both staves. The second measure contains a triplet of eighth notes in the treble clef and continues the eighth-note accompaniment in the bass clef.

The third system consists of two measures. The first measure contains a half note chord in the treble clef and the eighth-note accompaniment in the bass clef. The second measure is empty in both staves.

The fourth system consists of two measures. The first measure is empty in both staves. The second measure contains a half note chord in the treble clef and the eighth-note accompaniment in the bass clef. Above the treble clef staff, the letters (a), (b), and (c) are written above the first, second, and third notes of the chord respectively. A fermata is placed over the final note of the chord.

- 5.2.1 Complete the piano score up to bar 10 in the given style (12-bar blues). (9)
- 5.2.2 Insert the following chords at (a) and (b) using the correct note values:
- (a) $A^7/C^\#$
- (b) E^7 (2)
- 5.2.3 Figure the chord at (c), for example D/A.
- (c) _____ (1)
- [12]**
- TOTAL SECTION A: 60**

SECTION B: GENERAL MUSICAL KNOWLEDGE

Answer the questions in this section in the ANSWER BOOK provided.

QUESTION 6

Choose FIVE items from COLUMN B that matches any FIVE words/descriptions in COLUMN A. Write only the letter (A–L) next to the question number (6.1–6.13) in the ANSWER BOOK, for example 6.14 M.

COLUMN A		COLUMN B	
6.1	Ragtime	A	<i>The Rite of Spring</i>
6.2	12-bar pattern	B	<i>Smetana</i>
6.3	Cadenza	C	Polonaise
6.4	Theme and variations	D	<i>West Side Story</i>
6.5	Stately processional dance in triple metre	E	<i>Voiles</i>
6.6	A musical setting of a Goethe poem	F	<i>Symphony No. 4 in E Minor, Op. 98</i>
6.7	Czech musical nationalism	G	Concerto
6.8	Part of the National Anthem of South Africa	H	<i>Lost Your Head Blues</i>
6.9	Gentle rocking of sails in the wind	I	<i>La Bohème</i>
6.10	Ballet music	J	Enoch Sontonga
6.11	The Jets and the Sharks	K	<i>Der Erlkönig</i>
6.12	Aria	L	<i>The Entertainer</i>
6.13	Four movements		

(5 x 1)

[5]

QUESTION 7

7.1 Give a definition for THREE of the following terms. Write down only the definition next to the question number (7.1.1–7.1.6) in the ANSWER BOOK.

7.1.1 Whole-tone scale

7.1.2 Binary form

7.1.3 Cadenza

7.1.4 Opera

7.1.5 Improvisation

7.1.6 Modulation (3 x 2) (6)

7.2 Choose THREE of the following definitions. Give ONE musical term for each chosen definition. Write down only the definition next to the question number (7.2.1–7.2.4) in the ANSWER BOOK.

7.2.1 Music that depicts the mood or tells the story that is suggested by the title of a music work

7.2.2 Artful setting of a poem for solo voice and piano, which developed during the Romantic period and later

7.2.3 A term used in jazz for a note that is made more expressive by lowering its pitch

7.2.4 The performance or notation of music at another pitch, and therefore in a different key from that in which it was originally written or performed (3 x 1) (3)

[9]

QUESTION 8

8.1 What was the composer Jeanne Zaidel-Rudolph's role in the process of creating the National Anthem of South Africa? (3)

8.2 Name THREE characteristics of the swing band style. (3)

[6]

QUESTION 9

Explain how the following musical elements are used in the fourth movement of Brahms' *Symphony No. 4 in E Minor*.

- Form
- Texture
- Harmony
- Dynamics

(Three marks will be allocated for each element.)

[12]

QUESTION 10

10.1 There are certain style characteristics which are prominent in African choral music.

You have studied ONE of the following choral works:

- *Monna e Motenya* – B Gcisa
- *Plea from Africa* – JK Bokwe
- *Gabi Gabi* – Traditional, arranged by William Powell

Name FIVE important style characteristics to be found in the work that you have studied.

(5)

10.2 Write a paragraph on the South African popular music artist that you have studied (Mandoza or Lucky Dube or Steve Hofmeyr). Include biographical detail, style characteristics and name at least ONE song or album which the artist has released.

(5)

[10]

QUESTION 11

You and your friend are listening to a jazz piano solo on the radio. You do not agree on the style of the piece. Your friend says this is bebop and you say it is ragtime.

Write a short essay, and give reasons why you disagree with your friend by comparing the two styles.

[10]

QUESTION 12

Briefly describe the style characteristics of ONE of the following popular music genres:

- Heavy metal
- R&B pop
- Glam rock
- Brit pop
- Girl/Boy bands

[5]**QUESTION 13**

Select ONE of the following musical categories:

- Kwaito
- Moppies and ghomma songs
- Music for social occasions

Write a short essay on the category that you have studied. Refer to the origins and the stylistic features of the music.

[8]

TOTAL SECTION B: 65
GRAND TOTAL: 125

The page contains 15 blank musical staves, each consisting of five horizontal lines, arranged vertically down the page. These staves are intended for writing musical notation.