



NATIONAL SENIOR CERTIFICATE EXAMINATION  
NOVEMBER 2014

**CIVIL TECHNOLOGY**

**EXAMINATION NUMBER**

--	--	--	--	--	--	--	--	--	--	--	--	--	--	--	--	--	--	--	--

---

**ANSWER BOOKLET**

---

**QUESTION 1.3      COLUMN A AND B**

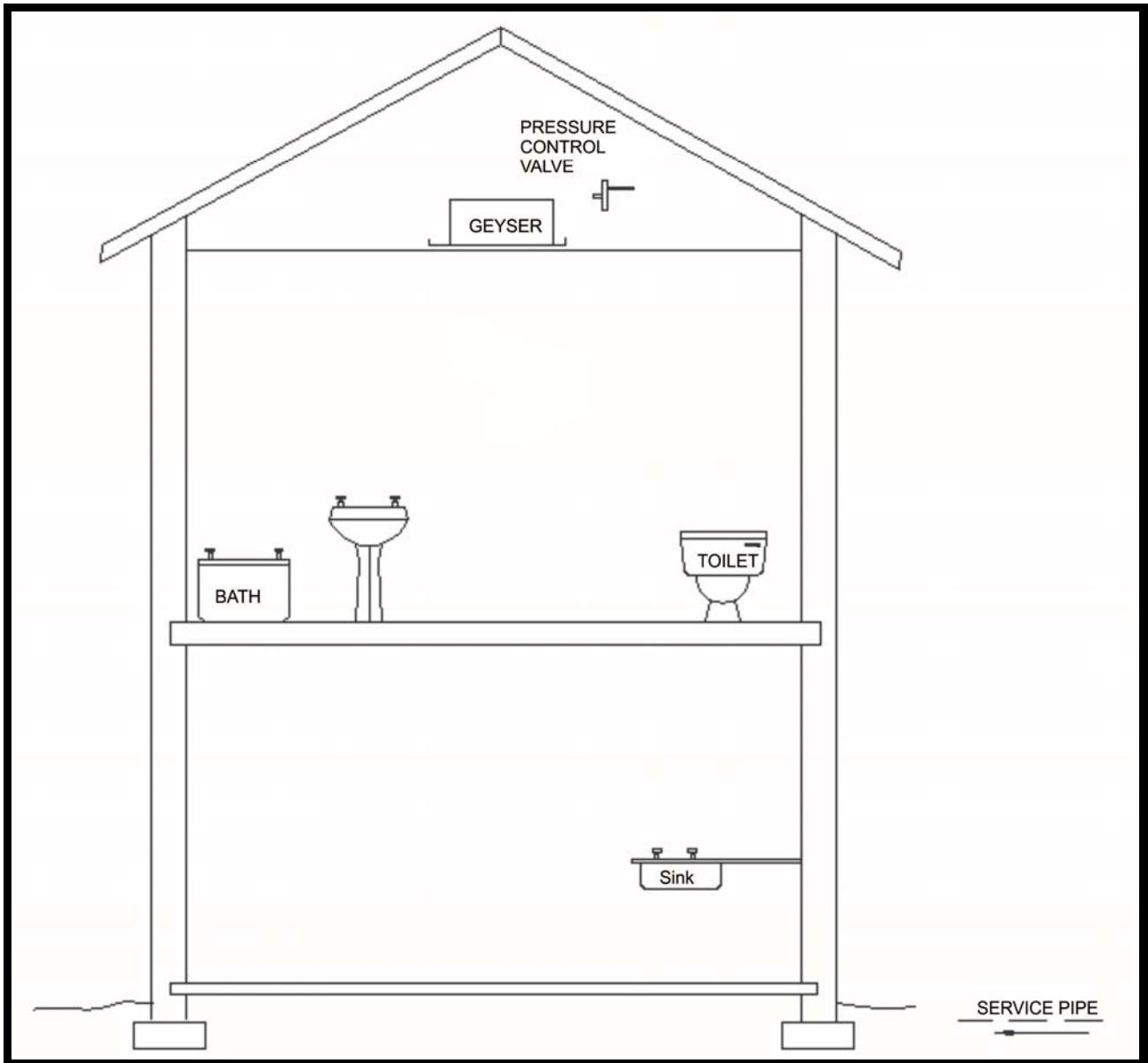
<b>COLUMN A</b>	<b>COLUMN B</b>
1.3.1	
1.3.2	
1.3.3	
1.3.4	
1.3.5	
1.3.6	
1.3.7	
1.3.8	
1.3.9	

**QUESTION 2.3      FORM WORK**

(10)

<b>Assessment Criteria</b>	<b>Mark</b>	<b>Mark obtained</b>
Correctness	5	
Accuracy scale	2	
Any three labels	3	
<b>Total</b>	<b>10</b>	

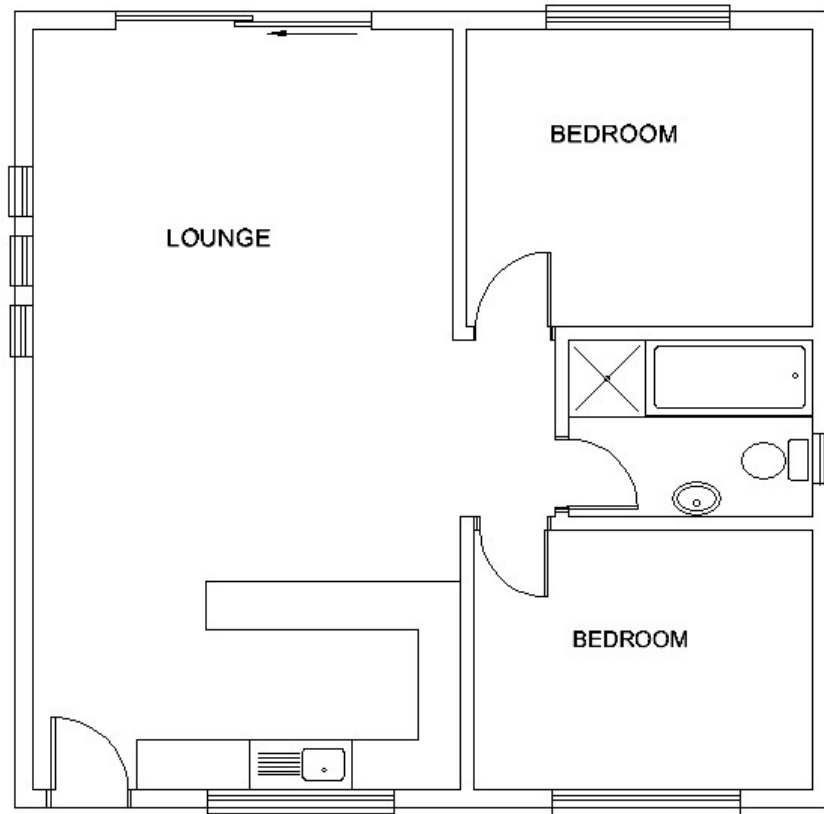
**QUESTION 3.2 TYPICAL WATER INSTALLATION**



**Figure 3.2**

Assessment Criteria	Mark	Mark obtained
Cold water supply from service pipe	1	
Cold water supply to outlets	3	
Hot water from geyser	1	
Hot water supply to outlets	3	
<b>Total</b>	<b>8</b>	

**QUESTION 3.3 ELECTRICAL DIAGRAM**



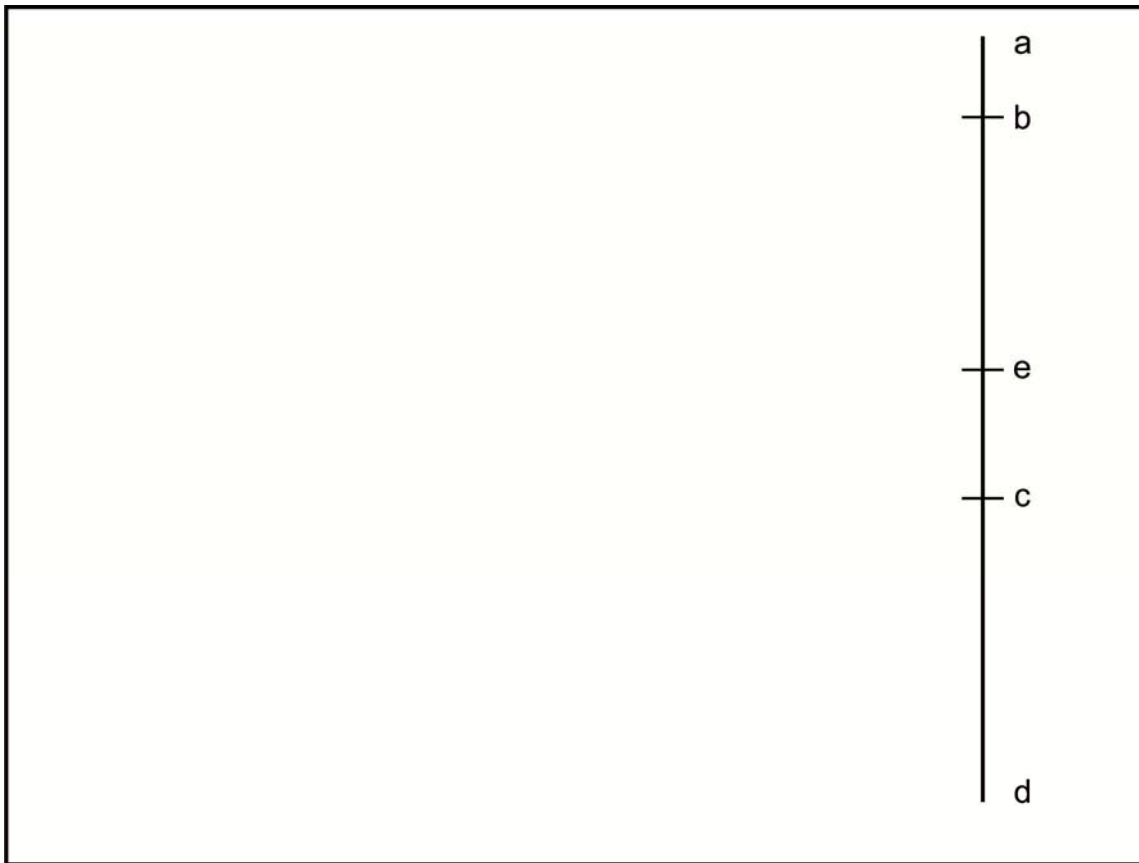
**Figure 3.3**

<b>Assessment Criteria</b>	<b>Mark</b>	<b>Mark obtained</b>
Switch socket outlet	4	
Fluorescent light (double)	1	
Filament lights	2	
Wall mounted (external)	1	
Single pole switch for lights	4	
Wiring switches to lights	2	
<b>Total</b>	<b>14</b>	

**QUESTION 4.6 QUANTITY SURVEYING**

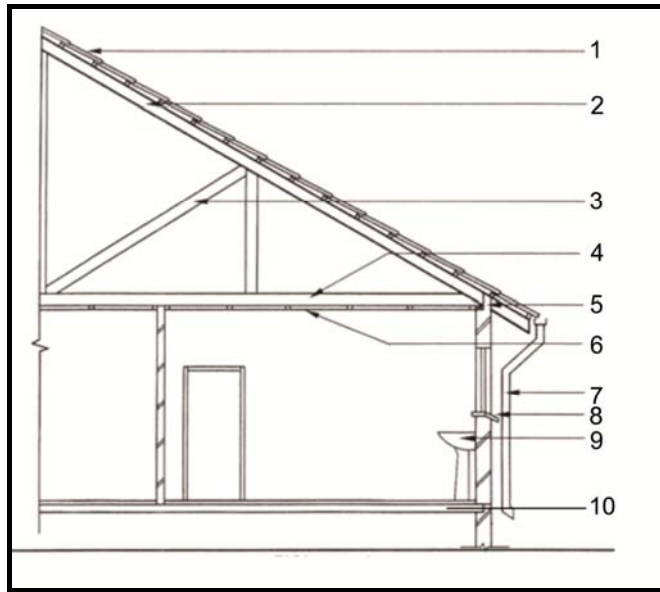
Item	Measurement	Result	Description
			Centre line
			Total bricks:
			Openings:
			Total Bricks:

**QUESTION 5.3**



Member	Nature	Magnitude
GF	Strut	A:
FE	Tie	B:
GH	C:	25 kN
JH	D:	28 kN

**QUESTION 6.1 SECTIONAL VIEW**



No.	Question	Answer	Mark	Mark obtained
6.1.1	What will be a suitable scale to draw this sectional view?		1	
6.1.2	Describe the mistake where the internal wall rests on the slab.		1	
6.1.3	What colour is used to indicate new brickwork on a planview?		1	
6.1.4	Draw the hatching symbol that indicates number 10.		2	
6.1.5	Draw the hatching symbol to indicate hardcore fill.		2	
6.1.6	Do you think the height of the door and window is correct? Justify your answer.		2	

6.1.7	What will be a suitable height for the super structure? 2 000 m or 2 800 m		1	
6.1.8 (a)	Abbreviations are used to communicate information on a houseplan. What does the abbreviation NGL stand for?		1	
6.1.8 (b)	What does the abbreviation FFL stand for?		1	
6.1.9	What is the function/use for number 5 on the building and what is the terminology used for number 5?		2	
6.1.10	Draw the symbol for number 9 that you will use on a planview of a house.		1	

**[15]**



**QUESTION 6.2**

<b>Assessment Criteria</b>	<b>Mark</b>	<b>Mark obtained</b>
Design of internal structure, placing of rooms and sanitary fitting	5	
External walls	2	
Internal walls	2	
Doors	2	
Windows	3	
North symbol	1	
Shower	1	
Wash Basin	1	
Water Closet	1	
Double sink	1	
Built-in-cupboard	1	
Application of scale	1	
Title and scale	2	
Neatness and line quality	2	
<b>Total</b>	<b>25</b>	